



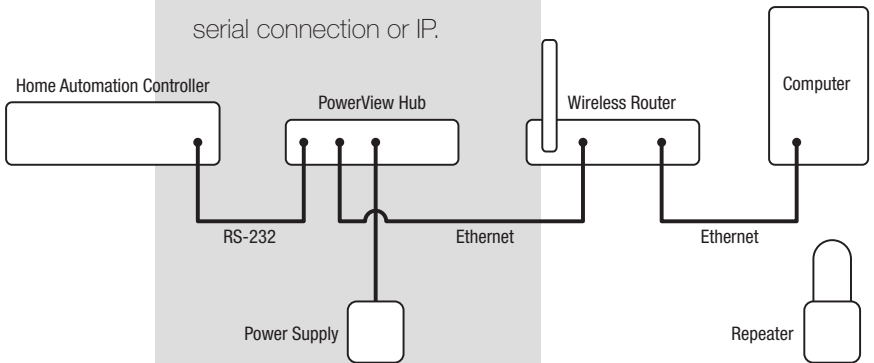


HunterDouglas
PowerView™ Hub
QUICK START GUIDE

Table of Contents

 Kit Contents	5
 Connections	7
 Home Automation Integration	17
 Troubleshooting	21

The PowerView™ Hub interfaces with the PowerView App to allow control of Hunter Douglas motorized window coverings from mobile devices. The Hub can also integrate with home automation systems via an RS-232 serial connection or IP.





- A** PowerView™ Hub
- B** USB Power Supply (black)
- C** USB Power Supply Cable
- D** Ethernet Cable
- E** Repeater Kit:
 - 1 PowerView Repeater
 - 1 USB Power Supply (white)



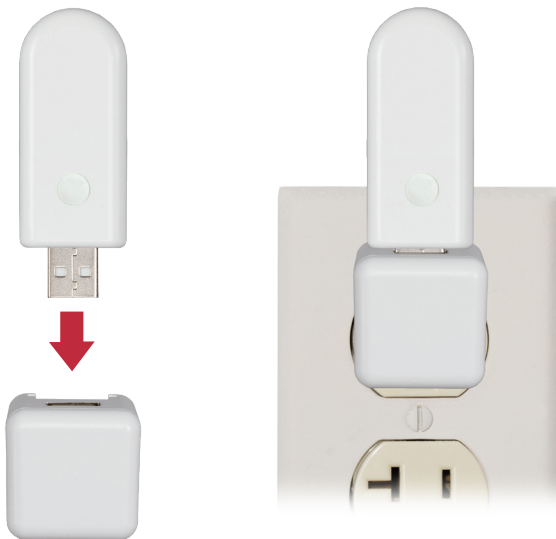
Connect power to Hub.

Connect the USB power supply cable to the power supply and Hub. Plug the power supply into an AC outlet or power strip.



Connect Hub to wireless router.

Connect the Ethernet cable to the Hub and an open LAN port on your router. The light on the front of the PowerView™ Hub will blink alternating RED/BLUE once it is powered up and receives an IP address from the router. When communication with the PowerView App is established, the light will turn a solid BLUE.



Distribute Repeater(s) as needed.

One Repeater per room with PowerView™ Motorized window coverings is recommended.



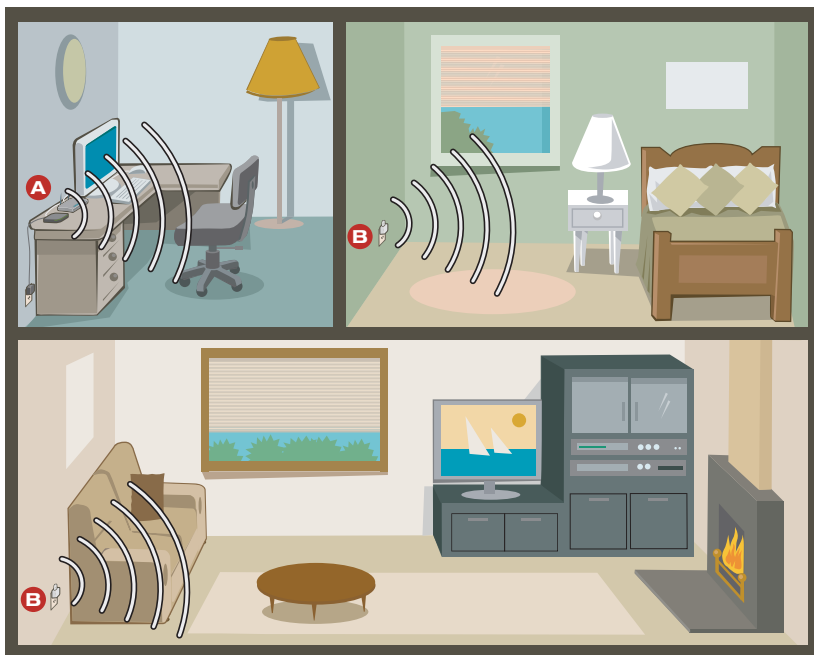
**Reset
Button**

X Button



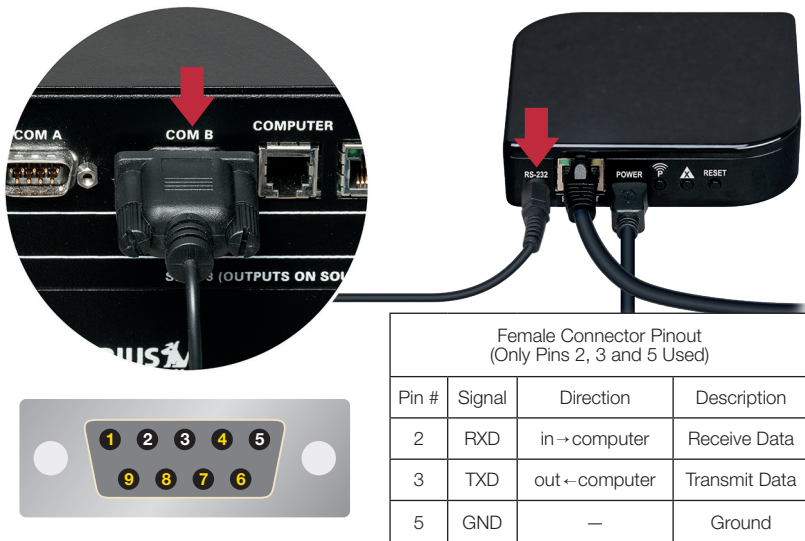
Test signal to Repeater(s).

Press the **P** button on the back of the PowerView™ Hub. The light on each Repeater should turn GREEN. If the Repeater does not blink GREEN, move the Repeater closer to the Hub. Other controls on the back of the Hub include the **RESET** button, which reboots the Hub; and the **X** button, which erases all of your data from the Hub when pressed and held for 6 seconds.



You're ready to use the PowerView™ App.

- A** PowerView™ Hub
- B** PowerView Repeater



(Optional) Connect to home automation controller.

To communicate with automation systems via RS-232, plug the serial cable (sold separately) into the RS-232 port on the Hub and then to the serial port on the home automation controller.

For more information regarding home automation integration, please contact your local Hunter Douglas dealer.

Problem: Cannot connect to the Hub with the PowerView™ App.

- Check for solid blue light on the Hub (see LED Feedback chart below).
- Check Ethernet connection between the Hub and wireless router.
- Check that the mobile device is on the same network as wireless router.

Problem: The Hub does not respond to serial commands.

- Check that the Hub responds to commands from the PowerView™ App.
- Check serial port connections.
- Check command strings for correct format.

PowerView LED Feedback	
Slow red blink	Connected to Ethernet but not joined to PowerView Shade Network
Solid blue	Connected, normal operation
Blank	Not functioning, check power

U.S. Radio Frequency FCC Compliance

This device complies with Part 15 of the FCC Rules. Operation is subject to the following two conditions:

- (1) This device may not cause harmful interference, and
- (2) This device must accept any interference received, including interference that may cause undesired operation.

This equipment has been tested and found to comply with the limits for a Class B digital device, pursuant to Part 15 of the FCC Rules. These limits are designed to provide reasonable protection against harmful interference in a residential installation. This equipment generates, uses and can radiate radio frequency energy and, if not installed and used in accordance with the instructions, may cause harmful interference to radio communications. However, there is no guarantee that interference will not occur in a particular installation. If this equipment does cause harmful interference to radio or television reception, which can be determined by turning the equipment off and on, the user is encouraged to try to correct the interference by one or more of the following measures:

- Reorient or relocate the receiving antenna.
- Increase the separation between the equipment and receiver.
- Connect the equipment into an outlet on a circuit different from that to which the receiver is connected.
- Consult the dealer or an experienced radio/TV technician for help.

Any changes or modifications not expressly approved by the party responsible for compliance could void the user's authority to operate the equipment.

Industry Canada

Under Industry Canada regulations, this radio transmitter may only operate using an antenna of a type and maximum (or lesser) gain approved for the transmitter by Industry Canada. To reduce potential radio interference to other users, the antenna type and its gain should be so chosen that the equivalent isotropically radiated power (e.i.r.p.) is not more than that necessary for successful communication.

This device complies with Industry Canada licence-exempt RSS standard(s). Operation is subject to the following two conditions: (1) this device may not cause interference, and (2) this device must accept any interference, including interference that may cause undesired operation of the device.

Class B Digital Device Notice

This Class B digital apparatus complies with Canadian ICES-003, RSS-Gen and RSS-210.

CAN ICES-3 (B)/NMB-3(B)

European Conformity

We, the undersigned,

Hunter Douglas Window Fashions

One Duette Way, Broomfield, CO 80020, USA

Hunter Douglas Europe B.V.

Piekstraat 2, 3071 EL Rotterdam, The Netherlands

certify and declare under our sole responsibility that the PowerView™ Hub conforms with the essential requirements of the EMC directive 2004/108/EC and R&TTE directive 1999/5/EC.

A copy of the original declaration of conformity may be found at www.hunterdouglas.com/RFcertifications.

